



**Alberta
Emerald
Foundation**

Emerald Youth Grants

Study Guides

Glenbow Ranch Park Foundation



30th Annual Emerald Award Recipient

Land

Synocrude

Table of Contents

 Overview

 Key Terms

 Conversation Questions

 Continuing Work

 Resources

 Notes



About the Alberta Emerald Foundation



We're Alberta's environmental good-news storytellers!

The Alberta Emerald Foundation (AEF) is nonprofit organization that showcases and inspires our province's environmental achievements through the annual Emerald Awards. Through our Sharing Stories Communications Strategy, the incredible work of Emerald recipients is highlighted and celebrated year-round. What began as the Emerald Awards in 1992 has evolved into an ongoing conversation.

The AEF empowers the next generation by providing grants to youth-led and youth-targeted environmental initiatives in our province. The Emerald Educational Engagement Grants Program funds up to 30 groups a year for their dream environmental project inspired by the Emerald Documentary Series, What On EARTH Can We Do? Podcast, and Emerald Speakers Series. After finding inspiration from this content featuring Emerald recipients, submit your pitch to us online. If it's accepted, you will receive \$750, thanks to our sponsor Syncrude Canada Ltd., to make your project a reality.

We encourage you to use this study guide as a resource to help you along in your project's journey. For more information, please visit

www.emerald.foundation.ca

Overview

What they're all about

Glenbow Ranch Park Foundation (GRPF) is a not-for-profit organization dedicated to the protection and preservation of Glenbow Ranch Provincial Park (GRPP) and other lands that possess important **heritage** and **ecological value**. In 2011, Glenbow Ranch Park Foundation and Alberta Parks officially opened Glenbow Ranch Provincial Park to the public. Glenbow Ranch protects 3,200 acres of **native fescue grasslands** and is an active cattle ranch. The Park is home to creatures big and small from moose to bumblebees, and spans 10 kms of the Bow River.

For 10 years, they have worked tirelessly to educate visitors, young and old, about grassland **ecosystems**. From their electric golf cart tours, which offer those with mobility issues a guided educational tour of the Park, to their Explore Grasslands Programming for children and interpretive signage, they strive to teach all about their fascinating and fragile grassland **ecosystem**. Enjoy stunning vistas, rolling hills, and spot the occasional cowboy as you explore nearly 40 kms of paved and shale path.



Established in 2007 by the Harvie Family, their Mission is to protect and promote Glenbow Ranch Provincial Park through engagement, education, **collaboration** and **conservation**. Glenbow Ranch Provincial Park is located on the lands of **Treaty 7** territory.

GRPF acknowledges the past, present, and future generations of Stoney Nakoda, Blackfoot, Tsuut'ina and Piikani, part of the Dene people, who help to **steward** these lands, as well as honour and celebrate this place.

Key Terms

Know your lingo



Collaboration: when people work together to complete a task. Collaboration involves co-operation and teamwork, and sharing ideas, knowledge, and skills to reach the same goal.

Conservation: also described as “to conserve”, means to protect a natural area or things that live in nature. It requires the sensible use of all Earth’s natural resources: water, soil, minerals, wildlife, and forests. People who care about conservation try to preserve natural resources so they will still be around in the future. They also try to keep the environment clean and healthy.

Ecological value: all of the benefits that a natural area or ecosystem provides.

Ecosystem: all of the living and non-living things in an area. This includes all of the plants, animals, and other living things that make up *communities* of life in an area.



Heritage: something that is handed down from the past. This can include stories, traditions, culture, and history, as well as physical things such as objects and land that people inherit.



Native fescue grasslands: a plant is considered “native” if it occurs (or used to occur) naturally in an area or ecosystem without any human introduction. There are many plants “native” to Alberta, including certain types of grasses such as the rough fescue grasslands. These regions are home to many species, helping with biodiversity and protection of water, soil, and air.

Not-for-profit organization: also sometimes called a “charity”, these organizations do not exist to make a “profit”, or money, and work to help the public.

Steward: to use resources responsibly and protect the natural environment, through conservation and sustainability that helps to create and maintain healthy ecosystems.

Treaty: refers to agreements made between the Government of Canada, Indigenous Groups, and provinces that define the ongoing rights and responsibilities of those on all sides.

Conversation Questions

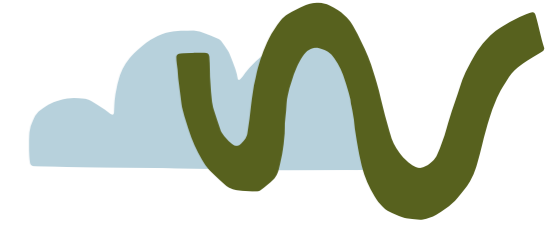
Let's talk about it

- What problem does GRPF address? How do they address this problem?
- Why are grassland areas important?
- How can cows help grassland areas?
- If you were to give a tour of somewhere, where would you take people?
- How do you honour and celebrate the ecosystems that you are part of?
- Do you know which Treaty territory you live on?
- What types of animals do you think live in the grassland areas of Alberta?
- What do you think a “fragile” ecosystem means?



Continuing Work

Inspiration for your Emerald Youth Grant



- Ask your school or family to create a native plant garden, where you only put plants that are native to the area that you live in. Find out about gardening with native plants to Alberta [here](#).
- Take a virtual tour of Tiger Lily Loop on GPRF's website, [here](#).
- Challenge your school to have an eco-friendly commuting day, where participants are encouraged to take more sustainable forms of transit such as: carpooling, public transit, walking and cycling.
- Watch this [documentary about Canada's Grasslands](#).
- Create a pollinator habitat at your school or local community centre by planting a pollinator-friendly flowerbed, installing a bee hotel, and providing a water source, such as a birdbath. See tips from [David Suzuki](#), the [National Wildlife Federation](#), and Emerald recipient [Edmonton and Area Land Trust](#)!
- Organize a field trip to the grasslands, or another natural area close-by to your school!



Resources

Click to discover

[Provincial Parks in Alberta](#)

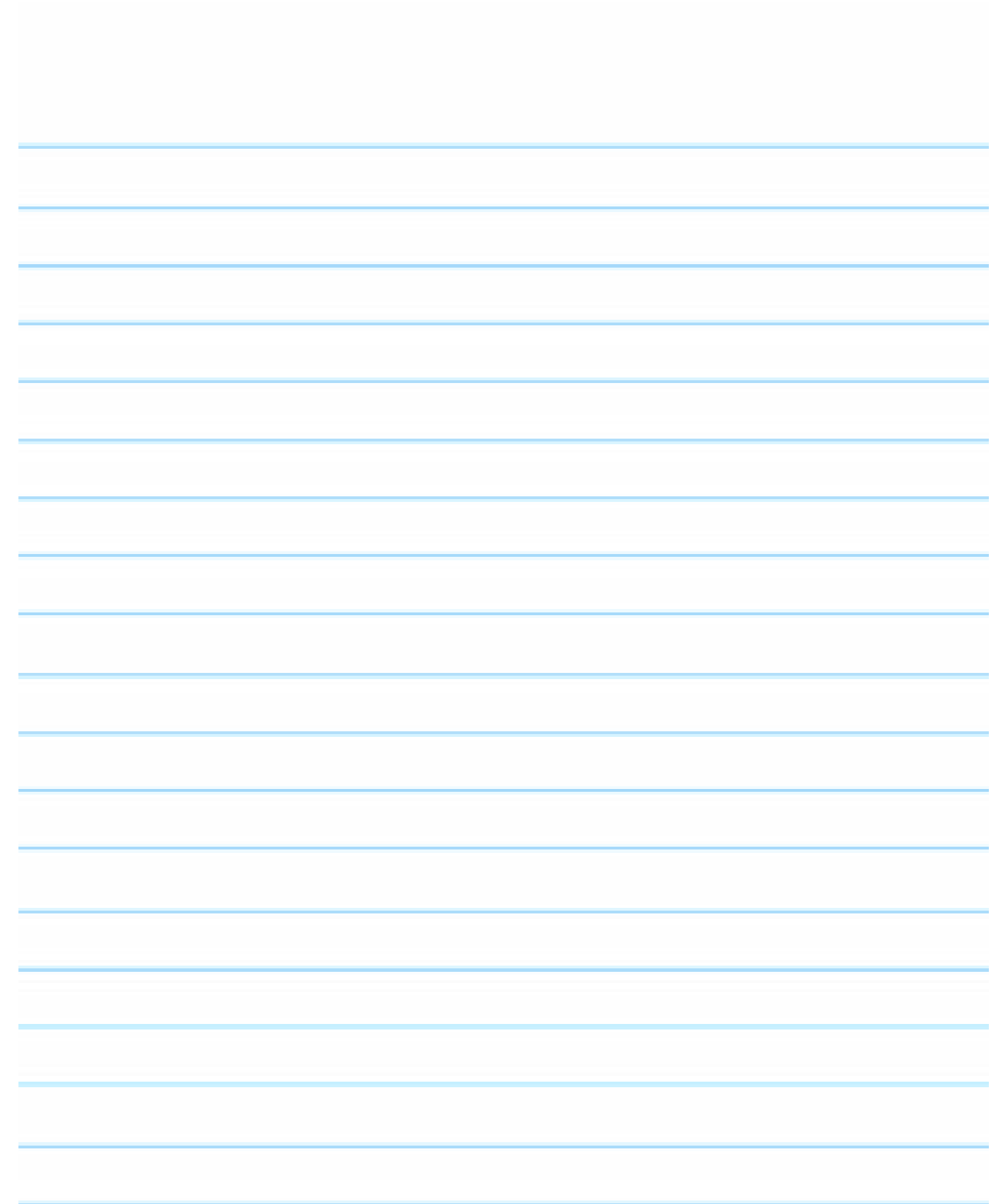
[Glenbow Ranch Park Foundation website](#)

[Treaty Map of Alberta](#)

[Britannica Kids](#) (used for Key Terms)

[36 environmental project ideas that you could get funding for!](#)

Notes





Emerald Youth Grants

The AEF would like to thank Syncrude Canada Ltd. for their sponsorship of the Emerald Youth Grants Program. As well, we'd like to thank Hoopla Media for their work on the Emerald Documentary Series.

This study guide was created and written by AEF Summer Student, Katherine Rogers.

[Click to apply for an Emerald Youth Grant!](#)

