

STUDY GUIDE

Emerald Youth Grants



Pres Winter

29th Annual Emerald Award Recipient
Lifetime Achievement



Syncrude

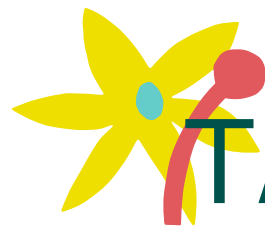


TABLE OF CONTENTS

04 - Overview

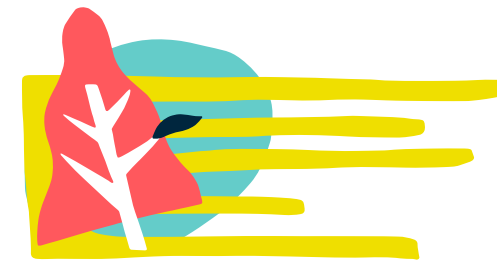
06 - Key Terms

08 - Conversation Questions

09 - Continuing Work

10 - Resources

11 - Notes



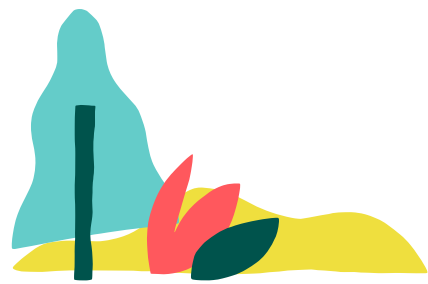
THE AEF

Who We Are.

The Alberta Emerald Foundation (AEF) has been the good-news environmental storytellers since 1991. We are a nonprofit organization that showcases and inspires our province's environmental achievements through the annual Emerald Awards. Through our Sharing Stories Communications Strategy, the incredible work of Emerald recipients is highlighted and celebrated year-round. What began as the Emerald Awards has evolved into an ongoing conversation.

The AEF empowers the next generation by providing grants to youth-led and youth-targeted environmental initiatives in our province. The Emerald Educational Engagement Grants Program funds up to 30 groups a year for their dream environmental project inspired by the Emerald Documentary Series, What On EARTH Can We Do? Podcast, and Emerald Speakers Series. After finding inspiration from this content featuring Emerald recipients, submit your pitch to us online. If it's accepted, you will receive \$750, thanks to our sponsor Syncrude Canada Ltd., to make your project a reality.

We encourage you to use this study guide as a resource to help you along in your project's journey. For more information, please visit emerald.foundation.ca.



OVERVIEW

What they're all about.

From the 1930s to the 1950s, the farming industry had cleared much of the land in Viking, Alberta, destroying bluebird habitats. In 1977, Pres Winter placed 200 **nest boxes** along the roadsides in a 12 mile radius of the small town in hopes of restoring the bluebird populations in the area. Every year since then, Pres cleans the nests and counts & records returning bluebirds, eggs laid, and chicks hatched and **banded**. In 2015, he hit his record year and had 441 **first nests** and 260 **second nests**, and banded 3167 bluebirds. In total he has expanded his trail to over 275 miles and 1200 nest boxes. All of this love and care for the **ecosystem** has been done on volunteer time and resources!



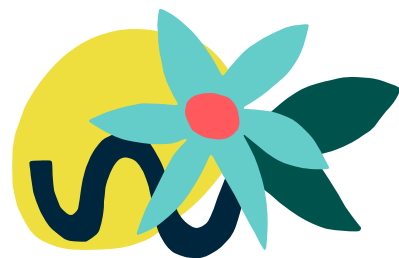
Pres has increased the bluebird populations in the area by providing the much needed nesting areas. He has helped bring back some balance to the environment and the ecosystem. The bluebird is part of the soil **food web** which feeds on **terrestrial insects**



to help control the **pests** that would potentially destroy crops.

While studying and learning about bluebirds, Pres became a **licensed bander** and has banded over 45,000 bluebirds to date. He has written about the bluebird in his articles in the newspaper and has held tours to teach students and visitors about **wildlife conservation**. Through his work, others have been inspired to start their own trail as well.





KEY TERMS

Know your lingo.

Nest Boxes:

man-made home for birds to make nests and lay eggs safely.

Banded:

a bird with an attachment of a small numbered tag to their leg or wing. This is used to identify them.

First Nests:

the initial nest that the bluebird builds and uses.

Second Nests:

the bluebird nest that was built in a previous year. Bluebirds typically reuse old nests that they had built in the previous year.

Ecosystem:

a large community of living organisms in a particular area. This includes plants and animals.

Food Web:

the different paths by which plants and animals are connected through predator and prey relationships. This represents all the different feeding relationships of plants and animals in an ecosystem.

Terrestrial Insects:

bugs that are adapted to living in land based ecosystems such as ants, flies, grasshoppers, and spiders.



Pests:

destructive insects, animals, and plants that are harmful to humans, or attack crops, food, and livestock.

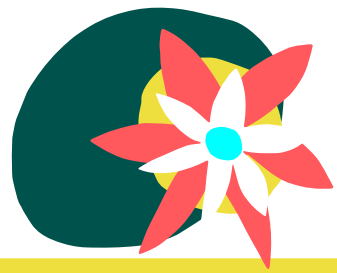
Licensed Bander:

a person who is skilled and knowledgeable in banding birds safely, and is certified by an Institutional Animal Care Committee.

Wildlife Conservation:

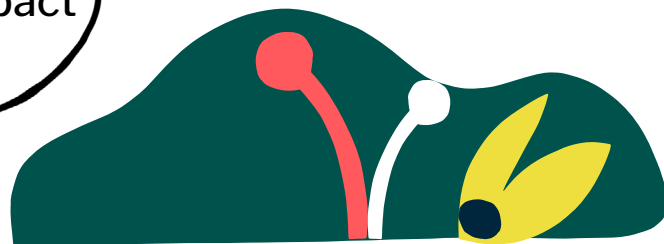
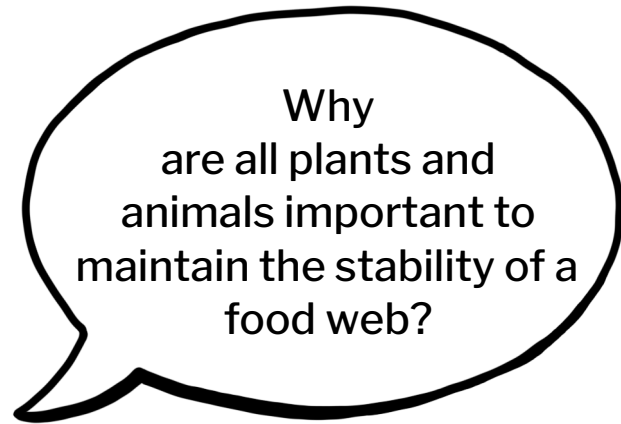
the practice of protecting animals, plants, and their habitats. Wildlife conservation is needed to balance natural processes and prevent species from going extinct.





CONVERSATION QUESTIONS

Let's talk about it.



CONTINUING WORK

Inspiration for your EEG project.

Find a local bird conservation organization and volunteer with them.

Take a bird watching trip with an expert and document the types of birds you observe.

Make your own bird feeder and put it up in your backyard. Document the types of birds that visit.

Read more about Pres Winter and start your own nest box trail.





RESOURCES

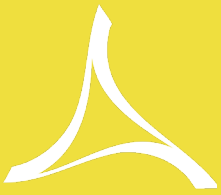
Click to discover.

- [6 Things you can do to help birds](#)
- [13 DIY bird feeders](#)
- [15 Common birds that visit bird feeders \(ID guide\)](#)
- [Volunteer with Calgary Wildlife Rehabilitation Society](#)
- [Bird Watching in Banff National Park](#)
- [Why we need birds](#)
- [10 Fun Facts About Bluebirds](#)
- [Food Chains 101](#)
- [Volunteer for Beaverhill Bird Observatory](#)



NOTES

Lined area for notes with a vertical red margin line on the left and stylized trees at the bottom.



Emerald Youth Grants

The AEF would like to thank **Syncrude Canada Ltd.** for their sponsorship of the Emerald Youth Grants Program. As well, we'd like to thank **Hoopla Media** and **Studio Hazel** for making our content look so good.

This study guide was written and designed by AEF summer student Leslie Guo.

**Click to apply for an
Emerald Youth Grant!**

Let's get social!

