

STUDY GUIDE

Emerald Youth Grants



Cochrane High School Sustainable Development Committee

29th Annual Emerald Award Recipient
Emerald Challenge : Climate Change

Synocrude

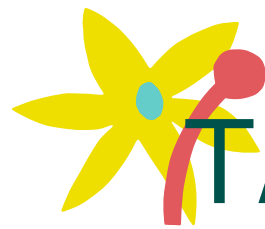


TABLE OF CONTENTS

04 - Overview

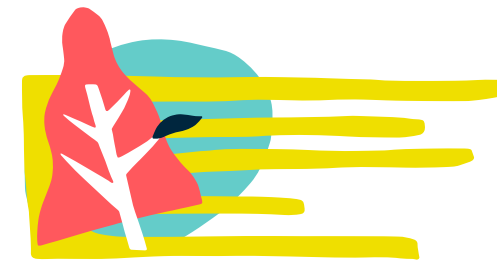
06 - Key Terms

08 - Conversation Questions

09 - Continuing Work

10 - Resources

11 - Notes



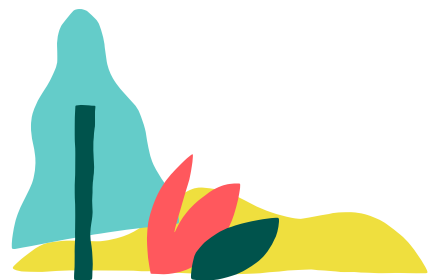
THE AEF

Who We Are.

The Alberta Emerald Foundation (AEF) has been the good-news environmental storytellers since 1991. We are a nonprofit organization that showcases and inspires our province's environmental achievements through the annual Emerald Awards. Through our Sharing Stories Communications Strategy, the incredible work of Emerald recipients is highlighted and celebrated year-round. What began as the Emerald Awards has evolved into an ongoing conversation.

The AEF empowers the next generation by providing grants to youth-led and youth-targeted environmental initiatives in our province. The Emerald Educational Engagement Grants Program funds up to 30 groups a year for their dream environmental project inspired by the Emerald Documentary Series, What On EARTH Can We Do? Podcast, and Emerald Speakers Series. After finding inspiration from this content featuring Emerald recipients, submit your pitch to us online. If it's accepted, you will receive \$750, thanks to our sponsor Syncrude Canada Ltd., to make your project a reality.

We encourage you to use this study guide as a resource to help you along in your project's journey. For more information, please visit emeraldfoundation.ca.



OVERVIEW

What they're all about.

Mission: to be the change they wish to see in the world.

Cochrane High School's Sustainable Development Committee pursues projects that will not only make their school more sustainable but will promote the wellbeing of future generations. The group is a volunteer, student-led committee that comes up with realistic, sustainable solutions. With the motto, inspired by Mahatma Gandhi, "be the change you wish to see in this world", this committee has spent the last 20 years developing a ten phased plan to **modernize** the school in the fight against **climate change**. Each phase focuses on either a policy or **infrastructure** change within the school.



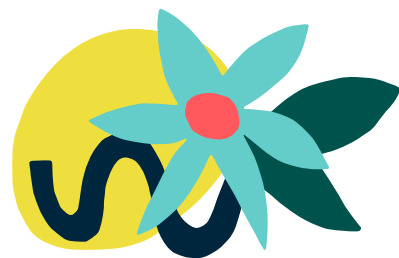
Most recently, they completed phase four of this plan. The committee spent over 18 months fundraising and implementing a **photovoltaic**



system that can **offset** 8.3% of the school's electrical consumption from traditional **carbon sources**. This has saved over 8,518 kg of carbon dioxide emissions and reduced electricity consumption from the **grid**. As well, they have a management system to **recycle** and **upcycle** their **e-waste**. This was not an easy project as it happened during one of Alberta's low **economic environments**. Still, the students were able to raise over \$100,00 for it.

By 2029, the Cochrane Sustainability Plan hopes to reduce greenhouse gas emissions by 30% and generate 30% of the entire town's energy from renewable sources.





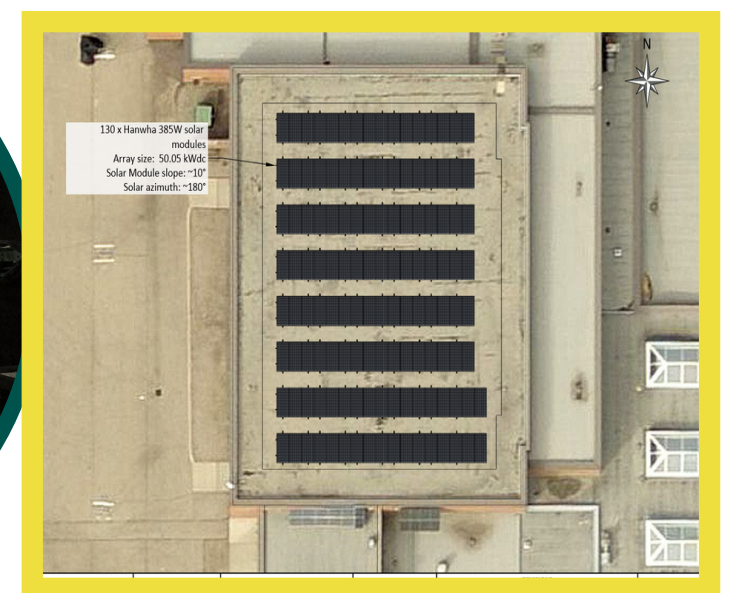
KEY TERMS

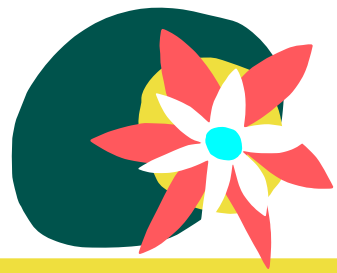
Know your lingo.

Modernize:	to adapt (something) to modern needs or habits, typically by installing modern equipment or adopting modern ideas or methods.
Climate change:	occurs when long term temperature and weather patterns are altered. For example: human activity, which threatens food production, flood risks, and wildlife.
Infrastructure:	the physical structures and systems of the building.
Photovoltaic system:	a system composed of one or more solar panels and other hardware that uses sunlight to generate electricity.
Innovators:	a person who does things that have never been done before. They introduce new ideas and methods to face challenges.
Offset:	to counteract something with an opposite effect. For example: a company may invest in an environmental project to offset its carbon footprint.
Carbon sources:	processes that release carbon into the atmosphere, such as burning fossil fuels and forest fires.
Grid:	an interconnected electrical network that connects a power generating plant to transmission lines that distribute electricity to consumers.



Recycle:	when objects are crushed and liquified to reuse their components.
Upcycle:	reusing an object in a new and creative way. For example: creating a biodegradable flower pot using old newspapers.
Electronic waste (e-waste):	discarded electronic devices, components, or materials. Improper disposal of these products can result in environmental pollution and harmful health effects.
Economic environments:	refers to the economic factors that can affect society's behaviour and how successful an operation may be. This can include government activity, tax rates, policies, and so on.





CONVERSATION QUESTIONS

Let's talk about it.

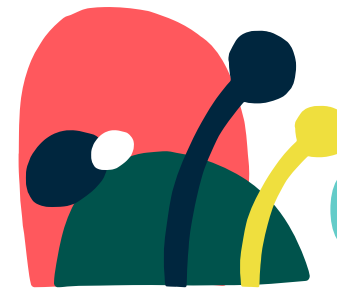
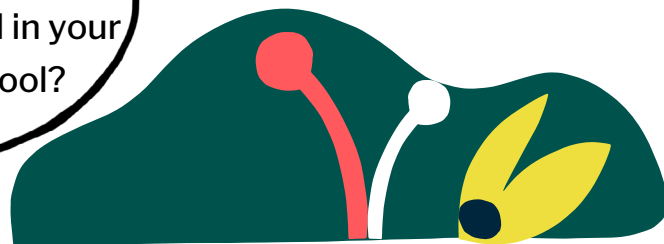
What has your school implemented to become more sustainable? How do you think they can continue to develop in this area?



What are large businesses doing to offset their carbon footprint? Do you think it's enough? What else can they do?

Climate change is one of the biggest problems we are facing. What can we as individuals do to tackle this issue?

Where have you seen solar panels or other forms of renewable energy used in your community and school?



CONTINUING WORK

Inspiration for your EEG project.

Work with your teachers to implement more sustainable practices in your school.

Start your own "thrift shop" at your school. Students can bring upcycled or gently used items and clothing for donation.

Find an e-waste recycler near you and host an e-waste drive in your community or school. Collect electronics that people want to dispose of and bring them there.

Create your own phased plan to implement into your personal life or school that focuses on a sustainable future.





RESOURCES

Click to discover.

Ideas to make your school/campus more sustainable

Sustainable school practices

5 ways to safely dispose of electronic waste

Cochrane Eco Centre for waste disposal

Edmonton electronic waste services

Calgary electronic waste services

50 ideas for upcycling

35 ways to offset your carbon footprint

What is climate change?



NOTES

This image shows a blank sheet of white paper designed for writing. It features horizontal light blue lines spaced evenly across the page. A single vertical red line runs down the left side, creating a margin. Along the bottom edge, there is a decorative border consisting of several stylized, colorful shapes resembling trees or branches. These shapes are colored in shades of green, yellow, and pink, and they appear to be growing upwards from the bottom edge. The overall design is clean and modern, suitable for educational or creative purposes.



Emerald Youth Grants

The AEF would like to thank **Syncrude Canada Ltd.** for their sponsorship of the Emerald Youth Grants Program. As well, we'd like to thank **Hoopla Media** and **Studio Hazel** for making our content look so good.

This study guide was written and designed by AEF summer student Leslie Guo.

**Click to apply for an
Emerald Youth Grant!**

Let's get social!

