



# STUDY GUIDE

Emerald Youth Grants

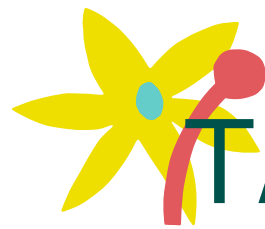


## **Agroforestry & Woodlot Extension Society**

**29th Annual Emerald Award Recipient**  
Community Group or Nonprofit  
Association: Grassroots



**Syncrude**



# TABLE OF CONTENTS

---

04 - Overview

---

06 - Key Terms

---

08 - Conversation Questions

---

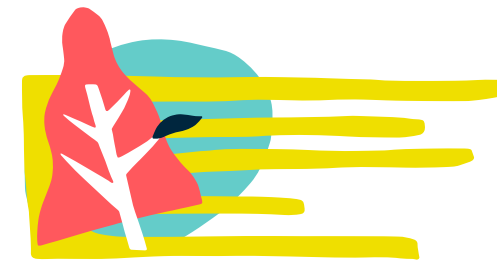
09 - Continuing Work

---

10 - Resources

---

11 - Notes



# THE AEF

---

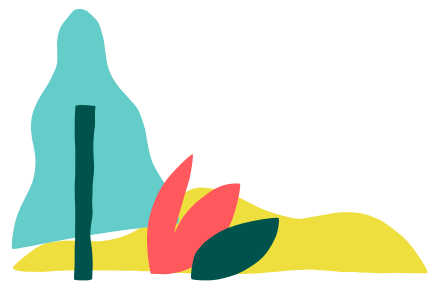
Who We Are.

The Alberta Emerald Foundation (AEF) has been the good-news environmental storytellers since 1991. We are a nonprofit organization that showcases and inspires our province's environmental achievements through the annual Emerald Awards. Through our Sharing Stories Communications Strategy, the incredible work of Emerald recipients is highlighted and celebrated year-round. What began as the Emerald Awards has evolved into an ongoing conversation.

The AEF empowers the next generation by providing grants to youth-led and youth-targeted environmental initiatives in our province. The Emerald Educational Engagement Grants Program funds up to 30 groups a year for their dream environmental project inspired by the Emerald Documentary Series, What On EARTH Can We Do? Podcast, and Emerald Speakers Series. After finding inspiration from this content featuring Emerald recipients, submit your pitch to us online. If it's accepted, you will receive \$750, thanks to our sponsor Syncrude Canada Ltd., to make your project a reality.

We encourage you to use this study guide as a resource to help you along in your project's journey. For more information, please visit [emeraldfoundation.ca](http://emeraldfoundation.ca).





# OVERVIEW

## What they're all about.

**Mission:** to provide forestry and **agroforestry**-based solutions, products, and services that are increasingly used to enhance the social, economic, and environmental values for private and public lands in Alberta.

Since 2010, the Agroforestry & Woodlot Extension Society (AWES) has been helping rural private landowners understand and enhance their natural environment through actively completing projects. Those involved have included **agricultural producers**, **acreage** owners, and some **municipal lands**. Their work extends in various locations in Alberta, from just south of Calgary to north of Peace County.



With key focus areas in education and **vegetation management**, AWES has restored much of Alberta's land to the conditions of natural forests. Their work has covered **riparian areas**, **shelter-belt systems**, and



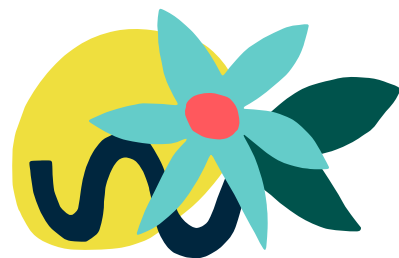
residual forests that are maintained by landowners. In the last 5 years, it has led to over 250,000 planted trees with an overall 80% success rate of growth. The results of their projects have enhanced the local **biodiversity**, habitat for wildlife (including **pollinators**), **watershed** protection and the level of **carbon capture**.

One of the key projects, the Blindman River Project, has started the **restoration** work along a major **tributary** of the Red Deer River. The Government of Alberta had rated this river as one of the 5 most severely impacted with the lowest water quality and water-flow issues. AWES has



hosted activities like planting native trees and shrubs along the banks of the river and working with farmers to find alternative water sources for their plants and animals. This project aims to address these issues with the help of specialists, partners, and volunteers.





# KEY TERMS

Know your lingo.

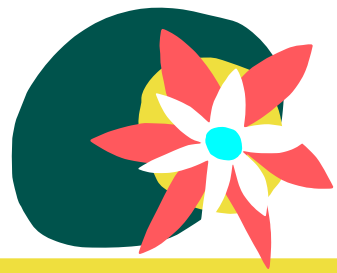
<b>Agroforestry</b>	agriculture that incorporates the cultivation and conservation of trees
<b>Agricultural Producers</b>	a farmer or rancher who produces crops or raises livestock for food
<b>Acreage</b>	a large area of land that is usually used for agricultural purposes
<b>Municipal Land</b>	an area of land that is owned by the city.
<b>Vegetation Management</b>	a broad term used to describe the control and elimination of unwanted plants. Examples include bush removal, use of herbicides, etc...
<b>Riparian areas</b>	the interface of the land and the river
<b>Shelterbelt systems</b>	trees or shrubs planted in a line for protection e.g protection of livestock against wind
<b>Biodiversity</b>	the variety of life that lives in a particular habitat
<b>Pollinators</b>	animals that move pollen to fertilize flowers



<b>Watershed</b>	a higher area of land that collects rainfall and feeds into rivers and streams below
<b>Carbon capture</b>	capturing carbon dioxide from large sources and transporting it to a site where it won't enter the atmosphere
<b>Restoration</b>	returning something to the condition it was originally in
<b>Tributary</b>	a small river or stream that flows into a larger river or lake







# CONVERSATION QUESTIONS

Let's talk about it.

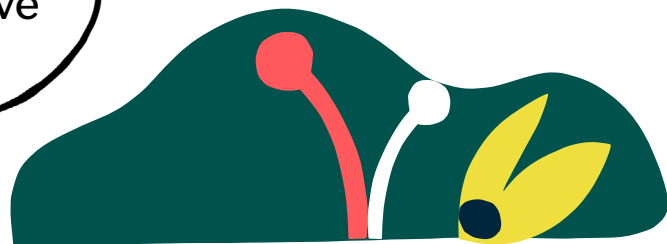
What are some examples of responsible and irresponsible treatment of the forests and land around you?

Have you ever seen a piece of land that looked like it needed restoration? What signs did you notice? What do you think caused the damage?

Why is vegetation management important to ecosystems?

What ecosystems can you identify around your area?

How do forests and trees improve ecosystems?



# CONTINUING WORK

Inspiration for your EEG project.

Study the types of vegetation in your neighborhood and how they create a suitable habitat for the species that live there. Host an event guiding classmates, friends, or people in your community on a forest walk and present what you've learned.

Find local organizations that run tree-planting initiatives and participate in one of their events. Or host one yourself!

With the support of a specialist or local organization, learn how to build birdhouses or pollinator homes. Run a workshop to teach classmates, friends, or people in your community your new DIY skills.

After studying proper tree care, plant one (or a few) in your backyard or community, where it's allowed.

Learn how to make your own fertilizer to prevent chemicals from entering natural bodies of water and use it in your garden.

Start a community garden at your school or local centre.





## RESOURCES

Click to discover.

## The Agroforestry and Woodlot Extension Society

## Root for Trees: Edmonton's Tree Planting Initiative

## City of Calgary- Planting Trees and Shrubs

## City of Red Deer: Tree Programs

## What is Agroforestry?

## 10 Ways to Protect and Conserve Biodiversity

## How to Control Invasive Plants

## 29 DIY Birdhouse Plans

## Alberta Forest Week

## How to Make Liquid Fertilizer



# NOTES

[illegible]





# Emerald Youth Grants

The AEF would like to thank **Syncrude Canada Ltd.** for their sponsorship of the Emerald Youth Grants Program. As well, we'd like to thank **Hoopla Media** and **Studio Hazel** for making our content look so good.

This study guide was written and designed by AEF summer student Leslie Guo.

**Click to apply for an  
Emerald Youth Grant!**

Let's get social!

